



PUFFCO

PEAK PRO INSTRUCTION MANUAL

READ CAREFULLY!

Please read the entire instruction booklet before using your device to ensure you're getting the most out of your Peak Pro. You will avoid damaging your device, or interrupting your experience if you do it now vs. later.

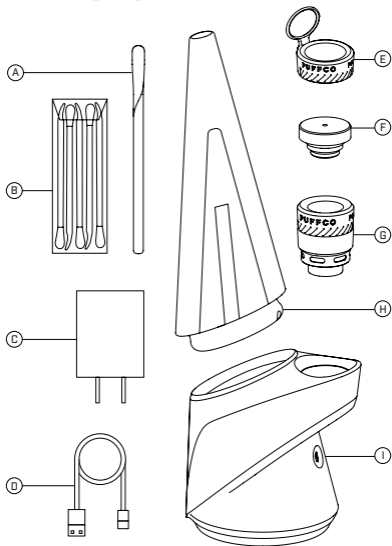
See [Puffco.com/Support](https://puffco.com/support) for instructional videos and helpful tips.

THE PUFFCO PEAK PRO

This guide will show you how to use your Peak Pro including preparation, cleaning, and app connectivity.

- What's inside / p 3 - 4
- What's new / p 5
- Quick start / p 6 - 10
- Temperature settings / p 11 - 12
- Cleaning your device / p 13 - 14
- Advanced features / p 15
- App integration / p 16
- Peak Protection / p 17

WHAT'S INSIDE:



A: Loading tool

B: Dual Tools (5)

C: AC Adapter

D: USB-C Cable

E: Carb Cap Tether

F: Carb Cap*

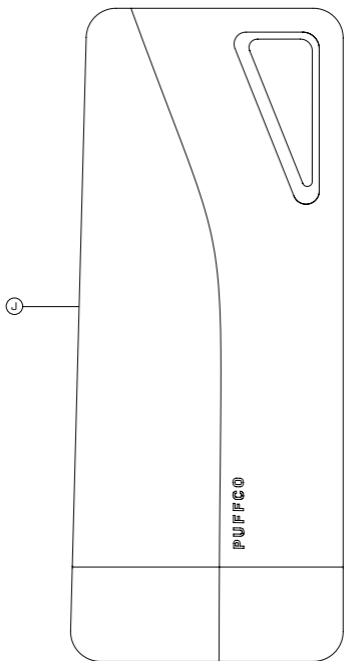
G: Chamber

H: Glass*

I: Peak Pro Base

J: Carrying Case

*Each glass piece is hand blown and may vary slightly in size.



WHAT'S NEW:



Bluetooth App
Enabled



Wireless Charging
[Dock sold separately]



USB-C charging



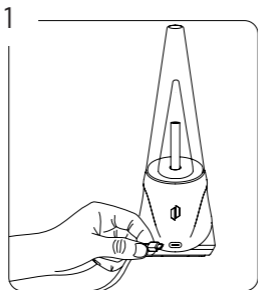
Intelligent
Temperature Control



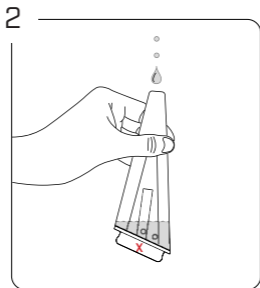
Large Capacity
Chamber



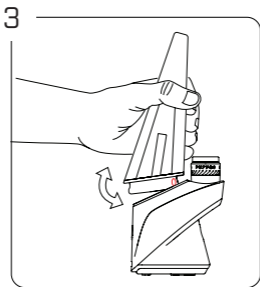
Customizable
LED lights

QUICK START:

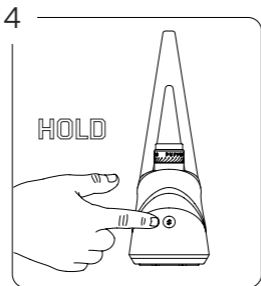
Fully charge the device before first use.
The lights will pulse white while charging.
The Peak Pro Power Dock can wirelessly charge your device. (sold separately)



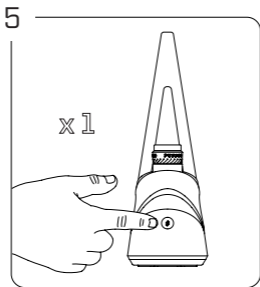
Fill glass with water just above the air-holes.
Do not fill glass while attached to base.
X - Do not allow water into lower section!



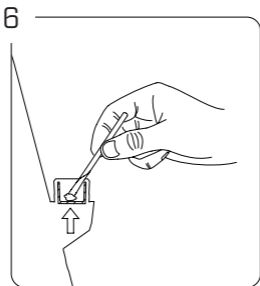
Align inlet hole on the front of the glass with chamber. Carefully push the front of glass into the base, then push the back down.



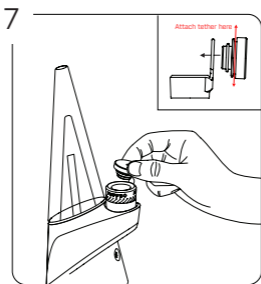
To unlock / lock the device, hold down the button for 3 seconds.
(Preserves battery between uses)



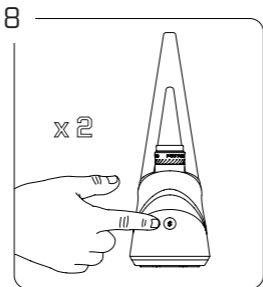
Single click to toggle through heat settings.
Blue (Low) - Green (Medium)
RED (High) - White (Peak)



Use loading tool or a Puffco Dual Tool to place contents on the bottom surface of the bowl (not the sides).

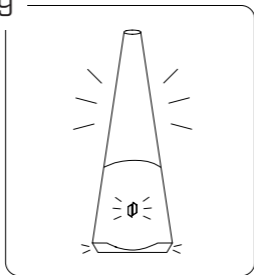


Place carb cap on top of chamber.
Press down until snug. Use the included
carb cap tether to keep it safe during use.



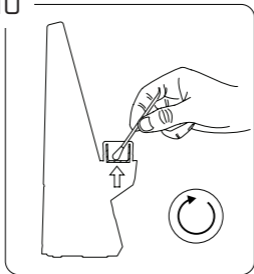
Double click to initiate heat-up. Press and hold
button anytime to exit. Pulsing light indicates
heat-up mode is active.

9



Device will vibrate and lights will flash 3 times when ready. Inhaling gently will produce the best results. *See p. 11 for boost mode.

10




Use a cotton swab or Dual Tool to clean the chamber after each use.
Wipe gently in a circular motion.

TEMPERATURE SETTINGS:

HOW TO CHOOSE A SETTING

1. Ensure device is on.
2. Click once to cycle through each heat level.
3. Double click to initiate heat-up.



-  These are the default color and temperature settings. They are further customizable through the app.

HEAT SETTING PROFILES:

Each heat setting has an intended purpose and results depending on the experience you're looking for. There is no wrong answer when selecting a setting, experiment to find what works best for you and your consumption needs.

PEAK (ADVANCED)

This setting is intended for the user looking for maximum vapor production and the strongest effects.

HIGH (STRONG)

This setting offers higher vapor production, while maintaining flavor quality.

MED (BALANCED)

This setting produces both quality flavor and good vapor production, offering the best of both worlds.


LOW (HIGH FLAVOR)

The lowest heat setting expresses the nuances of your concentrates with high flavor and low vapor production.

CLEANING: CHAMBER



1. Unscrew the chamber from the base.

 Do not handle if hot.



2. Light Cleaning:

Use a cotton swab to gently remove any residue with 90%+ isopropyl alcohol.



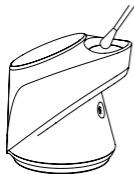
3. Deep Cleaning:

Submerge the chamber in 90%+ Iso for 20 minutes. Never use water (iso only).

 Iso is flammable, let it dry!

CLEANING: BASE

Preparation: Remove glass and chamber.



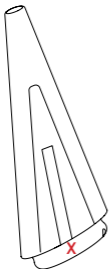
Gently clean the gold contact points using cotton swabs soaked in iso.

Clean the airpath between the chamber and the glass.

Do not allow water into the base at any time.

CLEANING: GLASS

Preparation: Carefully remove glass from base.



1. Once removed, submerge in iso.

2. After soaking, remove from iso alcohol and rinse clean with water. (Iso tastes bad, make sure it's completely removed).

Allow glass to thoroughly dry before re-attaching to base.

X - Do not let water seep into bottom chamber of glass.

GENERAL WARNINGS:

- Do not overfill the chamber.
- Do not blow or exhale hard into the glass. This will force water into the base.
- Do not store device with water in the glass, unless you have the Puffco Travel Glass.
- Strong inhales may cause spillage and damage to your chamber.
- Do not charge or operate below 32° F or above 100° F.
- Keep away from moisture and high humidity.
- Store in a cool dark place when not in use.
- During use the atomizer is hot (burn hazard).

ADVANCED FEATURES:

BOOST MODE:

Double click to activate boost mode.

This extends the time and/or increases the temperature of your hit. You can continue to boost as needed. By utilizing the app, you can customize the desired time and temperature of your boost.

READY MODE (APP):

*The Peak Pro Power Dock and mobile app are required to activate ready mode.

Once the Peak Pro is paired with a mobile device, enable "Ready Mode" found in the Peak Pro app settings.

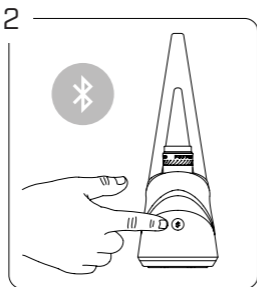
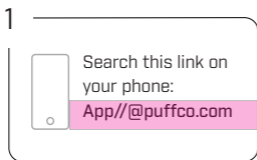
Your device will now automatically initiate the selected heat profile when lifted from Peak Pro Power Dock.

ERROR CODES:

- 1: No atomizer (3 white flashes)
- 2: Atomizer error (red blue red blue)
- 3: Device overheating in use (red for 5 seconds)
- 4: Low battery (3 red flashes)

APP INTEGRATION:

The Peak Pro app integration has a wealth of new features that allow you to customize your experience, unlock special features, and more.



Starting from the off position - hold the button for 6 seconds to sync your Peak Pro with your app. (It will turn on, keep holding, then it will glow blue)



COMPLIANCE:
Puffco Peak Pro



FCC STATEMENT

1. This device complies with Part 15 of the FCC Rules. Operation is subject to the following two conditions:

(1) This device may not cause harmful interference.

(2) This device must accept any interference received, including interference that may cause undesired operation.

2. Any changes or modifications not expressly approved by Puff Corporation could void the user's authority to operate the equipment

NOTE: This equipment has been tested and found to comply with the limits for a Class B digital device, pursuant to Part 15 of the FCC Rules. These limits are designed to provide reasonable protection against harmful interference in a residential installation. This equipment generates, uses and can radiate radio frequency energy and, if not installed and used in accordance with the instructions, may cause harmful interference to radio communications. However, there is no guarantee that

interference will not occur in a particular installation. If this equipment does cause harmful interference to radio or television reception, which can be determined by turning the equipment off and on, the user is encouraged to try to correct the interference by one or more of the following measures:

- Reorient or relocate the receiving antenna.
- Increase the separation between the equipment and receiver.
- Connect the equipment into an outlet on a circuit different from that to which the receiver is connected.
- Consult the dealer or an experienced radio/TV technician for help.

FCC/IC Radiation Exposure Statement:
This equipment complies with FCC/IC radiation exposure limits set forth for an uncontrolled environment. This equipment should be installed and operated with a minimum distance of 20cm between the radiator & your body.

IC STATEMENT

This device contains licence-exempt transmitter(s)/receiver(s) that comply with Innovation, Science and Economic Development Canada's licence-exempt RSS(s).

[1] This device may not cause interference; and

[2] This device must accept any interference, including interference that may cause undesired operation of the device.

Cet appareil contient des émetteurs / récepteurs exemptés de licence conformes aux RSS (RSS) d'Innovation, Sciences et Développement économique Canada.

[1] l'appareil ne doit pas produire de brouillage, et

[2] l'utilisateur de l'appareil doit accepter tout brouillage radioélectrique subi, même si le brouillage est susceptible d'en compromettre le fonctionnement."

© 2020 Puff Corp. All rights reserved, "Puffco", the Puffco Logo and "Peak" are registered trademarks of Puff Corp. Printed in China.

